



# Android

# *Fonts*

Victor Matos

Cleveland State University

Portions of this page are reproduced from work created and [shared by Google](#) and used according to terms described in the [Creative Commons 3.0 Attribution License](#).

# Fonts

Ice Cream Sandwich introduced a new font type family named **Roboto**.

The new font intends to provide a uniform touch to Android apps and display well on high-resolution screens.

The current TextView framework supports **regular**, **bold**, *italic*, and ***bold italic*** weights by default.

*(this page is written with the Roboto Font)*

## **Roboto Regular**

**ABCDEFGHIJKLMN**

**OPQRSTUVWXYZ**

**abcdefghijklmn**

**opqrstuvwxyz**

## **Roboto Bold**

**ABCDEFGHIJKLMN**

**OPQRSTUVWXYZ**

**abcdefghijklmn**

**opqrstuvwxyz**

Reference:

<http://developer.android.com/design/style/typography.html>

# Fonts

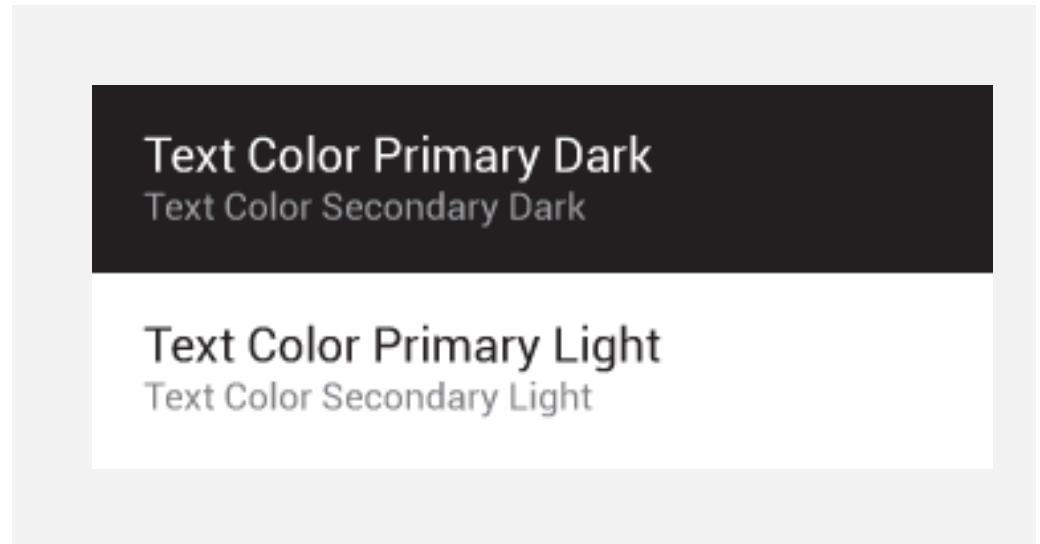
## Default type colors

The Android UI uses the following default text color styles:

**textColorPrimary** and  
**textColorSecondary**.

For light themes use

**textColorPrimaryInverse** and  
**textColorSecondaryInverse**.



Reference:

<http://developer.android.com/design/style/typography.html>

# Fonts

## Typographic Scale

The Android framework a limited set of type sizes.

Users can also select specific **textSize** in scale-independent pixels (sp).

Text Size Micro	12sp
Text Size Small	14sp
Text Size Medium	18sp
Text Size Large	22sp

Reference:

<http://developer.android.com/design/style/typography.html>

# Fonts

Android's **typeFace** attribute can be set using XML or code as follows:

1. XML clause `android:typeFace="..."` clause, or
2. Method `.setTypeFace(...)`

Options are:

**sans:** An m is wider than i, mmm iii

**serif:** An m is wider than i, mmm iii

**monospaced:** An mmm is not wider than iii

# Fonts

Also know as:

Grotesque or  
Gothic

**AaBbCc** Sans-serif font

**AaBbCc** Serif font

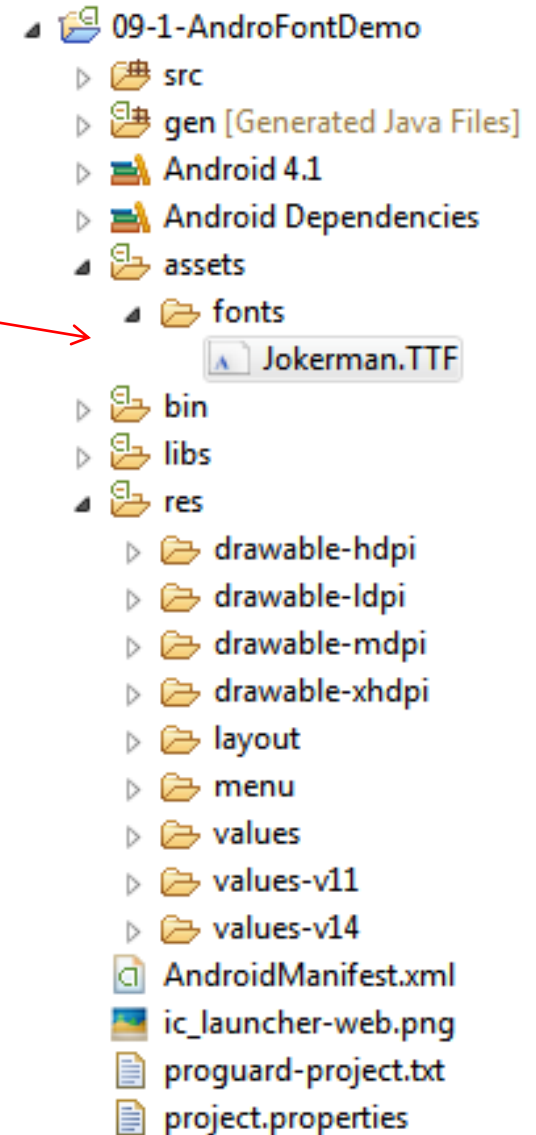
Roman Type

**AaBbCc** Serif font  
(red serifs)

# Fonts

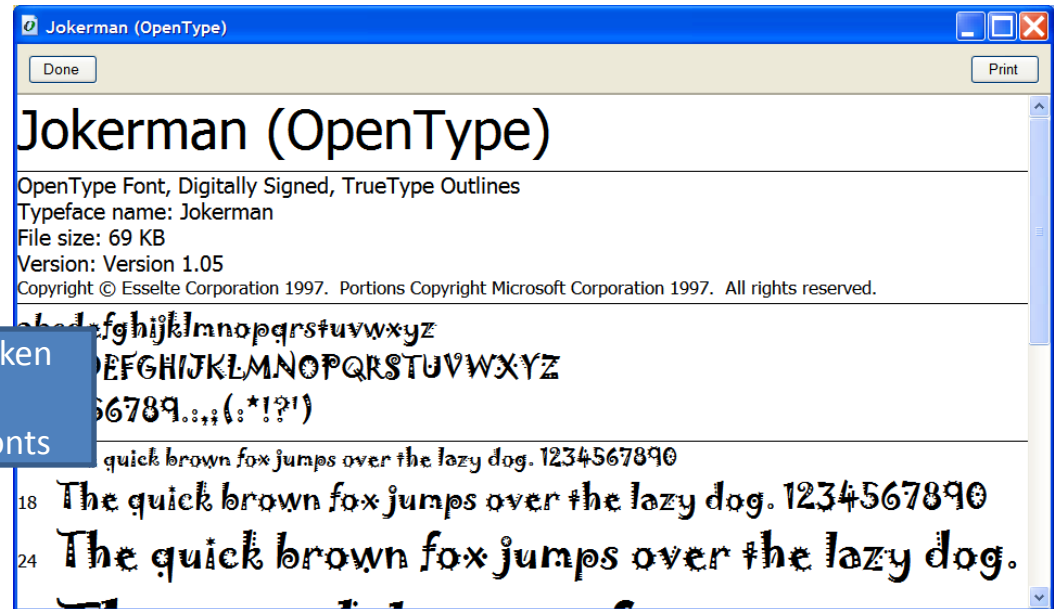
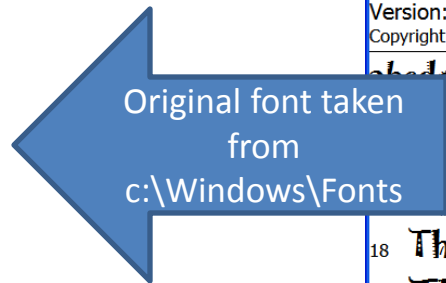
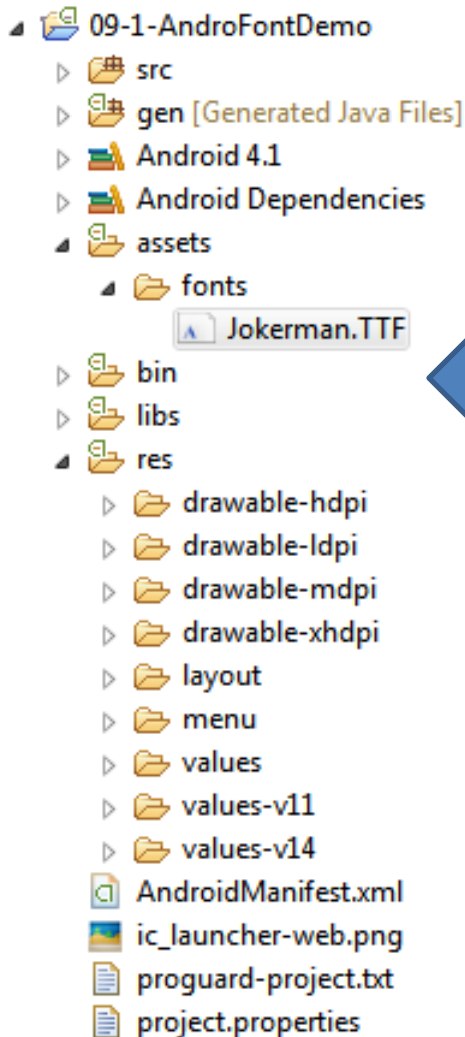
Developers may add any font to their application by following the next steps:

1. Create the **/fonts** folder in the **/assets** directory.
2. Copy *any fonts* you plan to use into the new folder (Look at `c:\Windows\Font` for your basic local collection).
3. Use Java code to bind the font with the UI widget wanting to display the custom typeface (*see example*).



# Fonts

**Example:** Getting ready to use the **Jokerman.TTF** font.



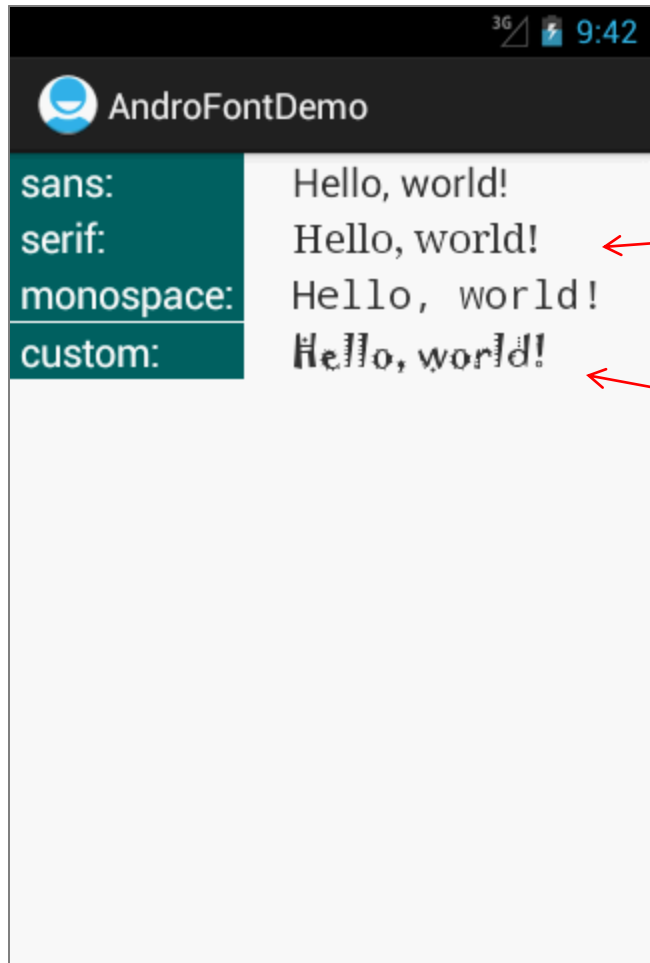
Example based on:  
The Busy Coder's Guide to Android Development  
by Mark L. Murphy  
Copyright © 2008-2009 CommonsWare, LLC.  
ISBN: 978-0-9816780-0-9



# Fonts

## Example:

Display the **Hello World !** message using different fonts.



Using the  
Roboto font

Using the font:  
Jokerman.TTF

### Note:

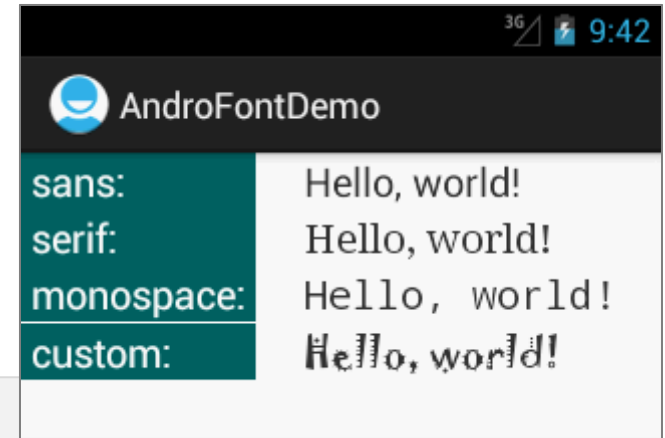
If you are using Windows look into the folder: **c:\Windows\Fonts** for fonts installed in your machine.

# Fonts

## Example Application:

Showing different FONT types.

XML Layout: **main.xml** (1 of 5)



```
<?xml version="1.0" encoding="utf-8"?>
<TableLayout xmlns:android="http://schemas.android.com/apk/res/android"
    android:layout_width="fill_parent"
    android:layout_height="fill_parent"
    android:orientation="vertical"
    android:stretchColumns="1" >

    <TableRow
        android:layout_width="fill_parent"
        android:layout_height="wrap_content"
        android:orientation="horizontal" >
```

# Fonts

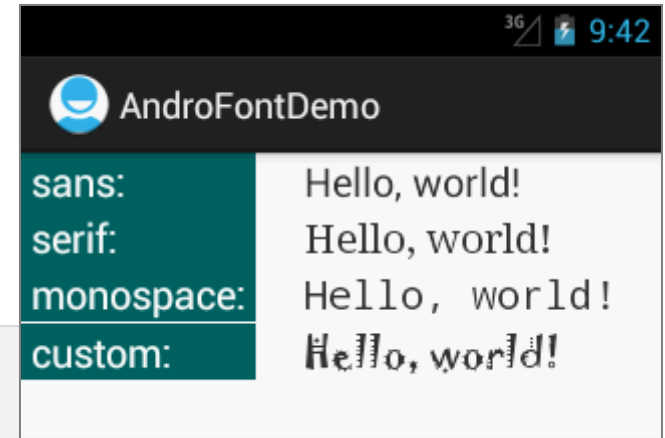
## Example Application:

Showing different FONT types.

XML Layout: **main.xml** (2 of 5)

```
<TextView
    android:layout_width="wrap_content"
    android:layout_height="wrap_content"
    android:layout_marginRight="24dp"
    android:background="#ff006666"
    android:text=" sans:"
    android:textColor="@android:color/primary_text_dark"
    android:textSize="20sp" >
</TextView>

<TextView
    android:layout_width="wrap_content"
    android:layout_height="wrap_content"
    android:text="Hello, world!"
    android:textSize="20sp"
    android:typeface="sans" > ←
</TextView>
</TableRow>
```



# Fonts

## Example Application:

Showing different FONT types.

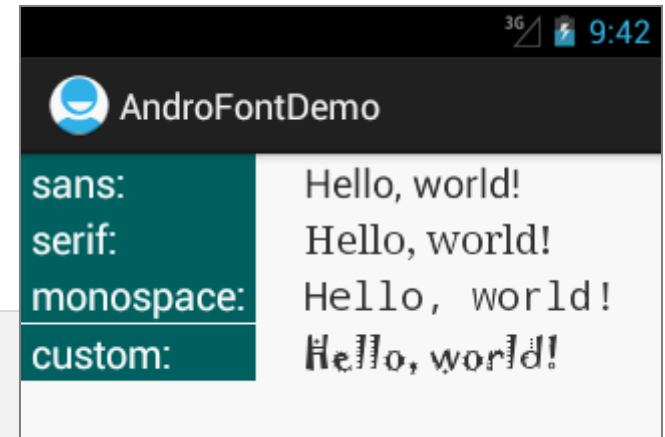
XML Layout: **main.xml** (3 of 5)

```
<TableRow
    android:layout_width="fill_parent"
    android:layout_height="wrap_content"
    android:orientation="horizontal" >

    <TextView
        android:layout_width="wrap_content"
        android:layout_height="wrap_content"
        android:layout_marginRight="24dp"
        android:background="#ff006666"
        android:text=" serif:"
        android:textColor="@android:color/primary_text_dark"
        android:textSize="20sp" >

    </TextView>

    <TextView
        android:layout_width="wrap_content"
        android:layout_height="wrap_content"
        android:text="Hello, world!"
        android:textSize="20sp"
        android:typeface="serif" > ←
    </TextView>
</TableRow>
```



# Fonts

## Example Application:

Showing different FONT types.

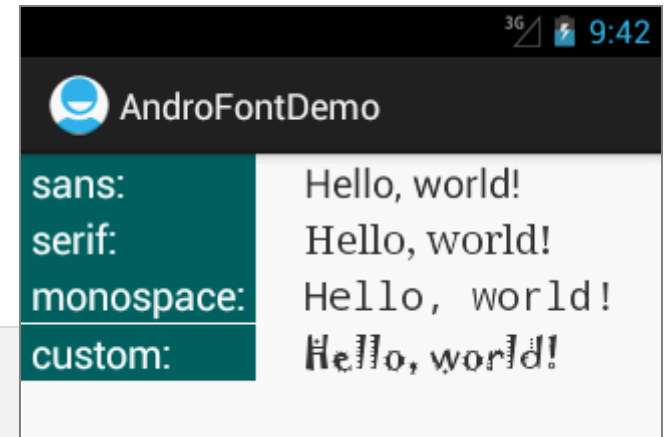
XML Layout: **main.xml** (4 of 5)

```
<TableRow
    android:layout_width="fill_parent"
    android:layout_height="wrap_content"
    android:orientation="horizontal" >

    <TextView
        android:layout_width="wrap_content"
        android:layout_height="wrap_content"
        android:layout_marginRight="24dp"
        android:background="#ff006666"
        android:text=" monospace: "
        android:textColor="@android:color/primary_text_dark"
        android:textSize="20sp" >

    </TextView>

    <TextView
        android:layout_width="wrap_content"
        android:layout_height="wrap_content"
        android:text="Hello, world!"
        android:textSize="20sp"
        android:typeface="monospace" > ←
    </TextView>
</TableRow>
```



# Fonts

## Example Application:

Showing different FONT types.

XML Layout: **main.xml** (5 of 5)

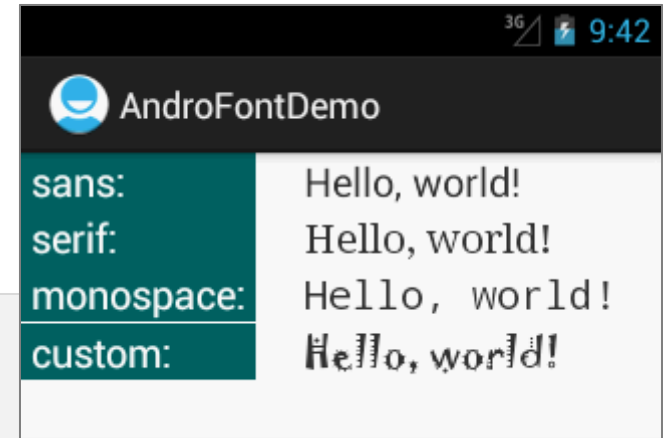
```
<TableRow
    android:layout_width="fill_parent"
    android:layout_height="wrap_content"
    android:orientation="horizontal" >

    <TextView
        android:layout_width="wrap_content"
        android:layout_height="wrap_content"
        android:layout_marginRight="24dp"
        android:background="#ff006666"
        android:text=" custom:"
        android:textColor="@android:color/primary_text_dark"
        android:textSize="20sp" >

    </TextView>

    <TextView
        android:id="@+id/custom" ←
        android:layout_width="wrap_content"
        android:layout_height="wrap_content"
        android:text="Hello, world!"
        android:textSize="20sp" >

    </TextView>
</TableRow>
</TableLayout>
```



# Fonts

## Example Application:

Showing different FONT types.

XML Layout: **main.xml** (5 of 5)

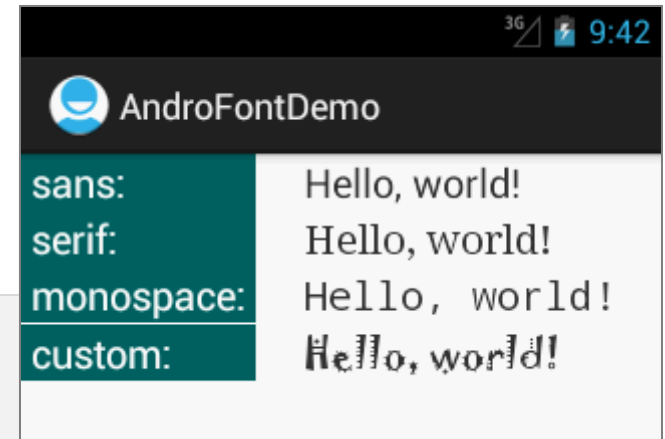
```
public class AndroFontDemo extends Activity {
    @Override
    public void onCreate(Bundle savedInstanceState) {
        super.onCreate(savedInstanceState);
        setContentView(R.layout.main);

        // bind the "custom" TextView with chosen font
        TextView txtCustom=(TextView)findViewById(R.id.custom);

        txtCustom.setTypeface(Typeface.SANS_SERIF);

        Typeface myNewFace=Typeface.createFromAsset(getAssets(),
            "fonts/Jokerman.TTF");

        txtCustom.setTypeface(myNewFace);
    } //onCreate
} //class
```



# Fonts

Questions ?